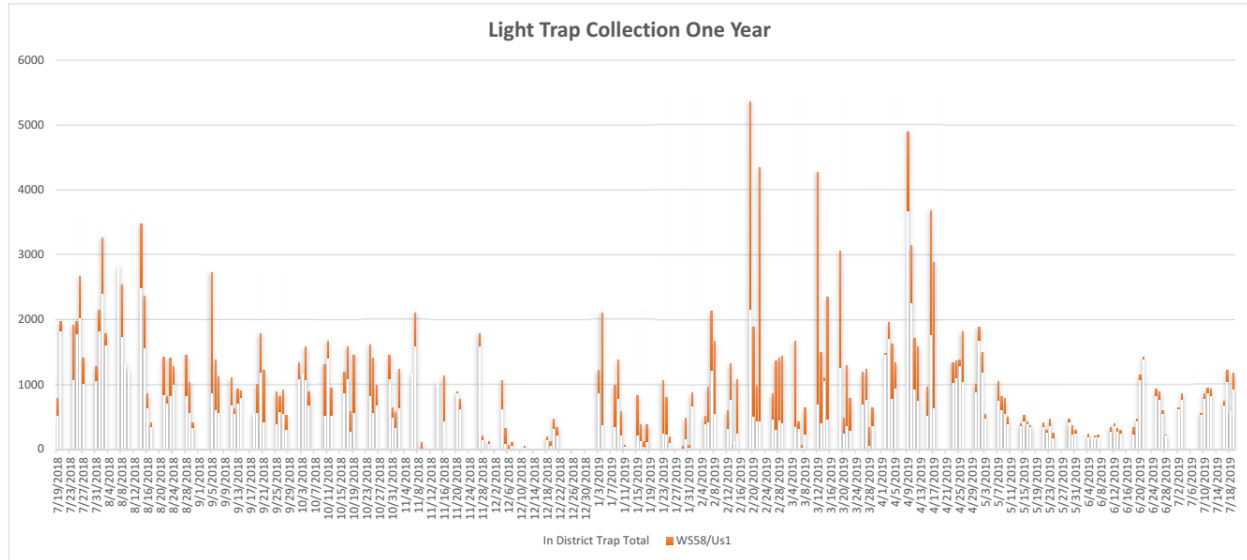
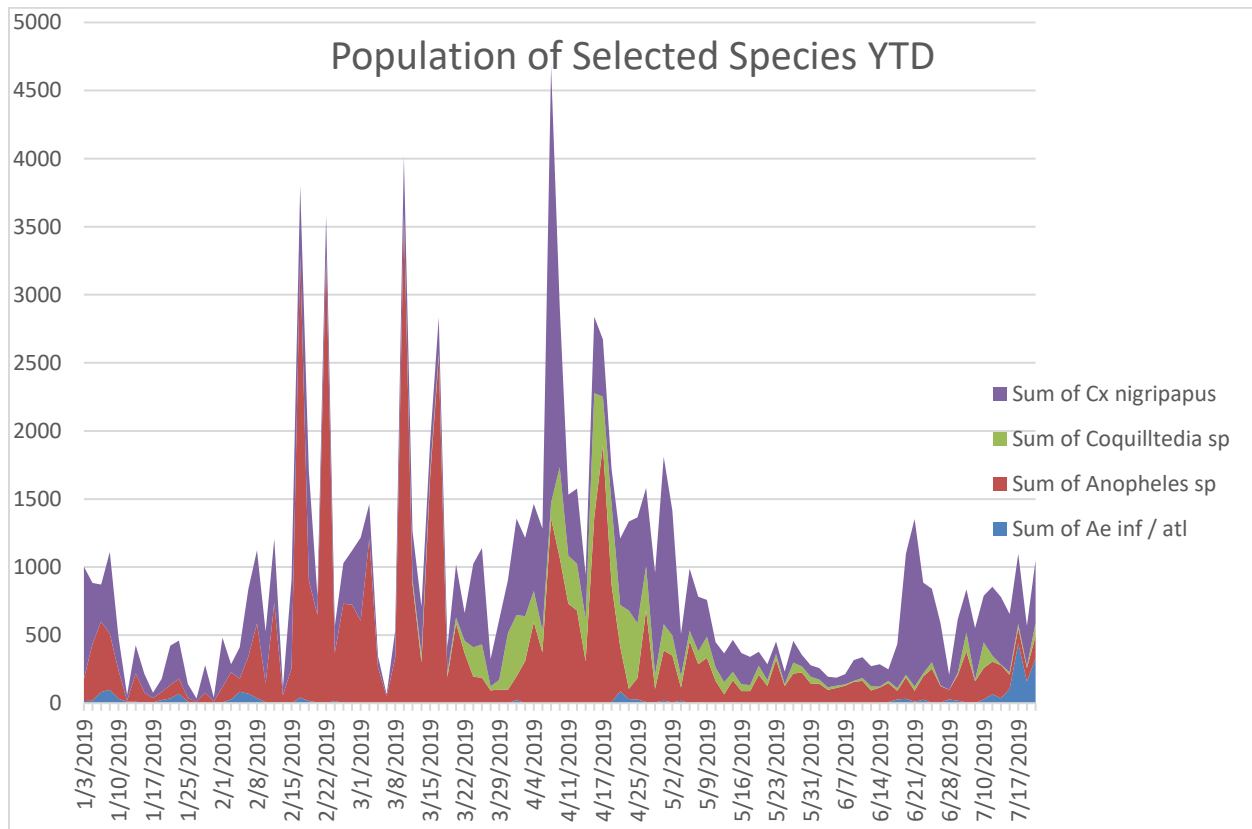


Week of 7/15/2019 Operations Update

Normal population numbers have finally returned after a prolonged dry-period. The stacked-bar graph below shows the total mosquitoes from all traps in the District in white. The red is the sole trap we keep on the West-side of US-1 to monitor outside the District.



The chart below shows a breakdown of just four of the species we collect daily in the traps. Each has a different biology that explains why the peak in population is different. Most recently *Aedes infirmatus* (in blue) has showed up in our traps. This species is a floodwater species, so it lays it's eggs in dry soil that will flood and allow it's eggs to hatch when flooded. The larvae are able to evade predators such as fish and amphibians because the sites are not permanently wet.



Zones in yellow were sprayed by truck once, orange was sprayed twice this week. Blue blocks were treated by air.

